

# PE ISUS

Clarinet 1

Arj. Varasciuc Vasile

*Andante*

*mf*

2

*mf*

Nr. 2.

*mp*

*mf*

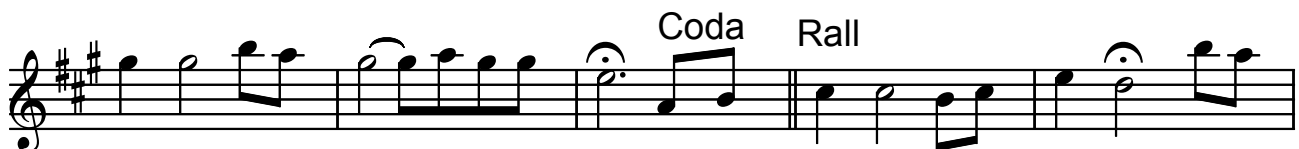
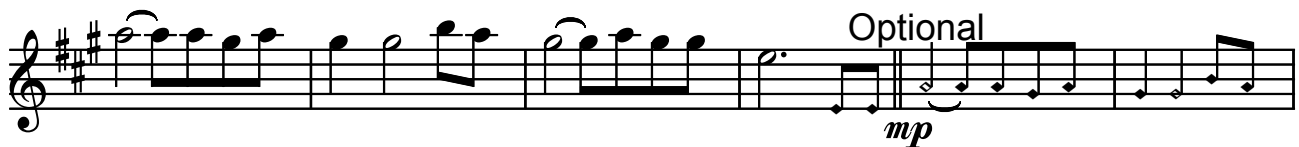
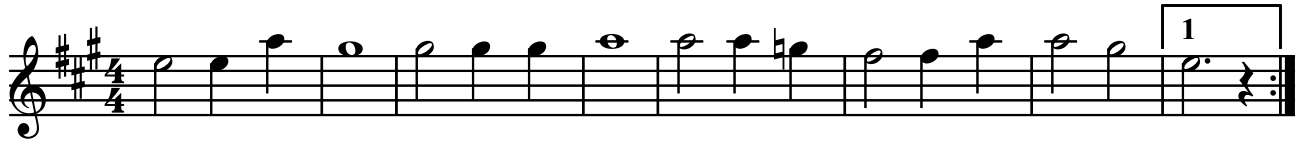
*mf*

Coda Rall

# PE ISUS

Clarinet 2

Arj. Varasciuc Vasile



# PE ISUS

Contrabas

Arj. Varasciuc Vasile

Andante

*mf*

*mf*

Nr. 2.  
*mp*

*mf*

*mf*

1 2 Coda Rall  
*mf*

# PE ISUS

Directie

Arj. Varasciuc Vasile

$\text{♩} = 80$  Toti

*mf*

1

Mandolina 1 2

*mp*

Andante

Nr. 2.

*f*

*p*

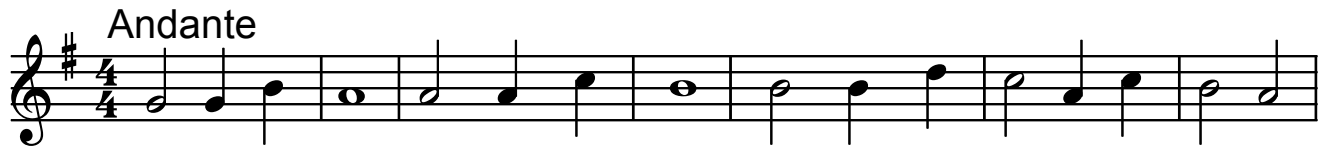
1

Coda Rall

# PE ISUS

Mandolina 1

Arj. Varasciuc Vasile



# PE ISUS

Mandolina 2

Arj. Varasciuc Vasile

Andante

The first staff of music is in treble clef, key of D major (one sharp), and 4/4 time. It begins with a dynamic marking of *mf*. The melody consists of a series of eighth and quarter notes, ending with a half note.

The second staff of music is in treble clef, key of D major, and 4/4 time. It features a first ending bracket labeled '1' and a second ending bracket labeled '2'. The dynamic marking is *mp*. The text 'Duet 1 - 2.' is written above the staff, and 'Toti' is written above the second ending. The melody continues with eighth and quarter notes.

The third staff of music is in treble clef, key of D major, and 4/4 time. It starts with the tempo marking 'Andante' and a dynamic marking of *mp*. The melody continues with eighth and quarter notes.

The fourth staff of music is in treble clef, key of D major, and 4/4 time. It begins with the tempo marking 'Nr. 2.' and a dynamic marking of *mf*. The melody consists of eighth and quarter notes.

The fifth staff of music is in treble clef, key of D major, and 4/4 time. It continues the melody with eighth and quarter notes, ending with a dynamic marking of *mf*.

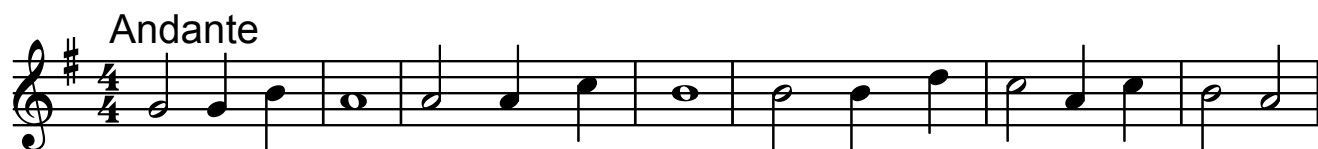
The sixth staff of music is in treble clef, key of D major, and 4/4 time. It continues the melody with eighth and quarter notes.

The seventh staff of music is in treble clef, key of D major, and 4/4 time. It features a first ending bracket labeled '1' and a second ending bracket labeled '2'. The text 'Coda Rall' is written above the staff. The melody concludes with a final note and a fermata.

# PE ISUS

Vioara 1

Arj. Varasciuc Vasile

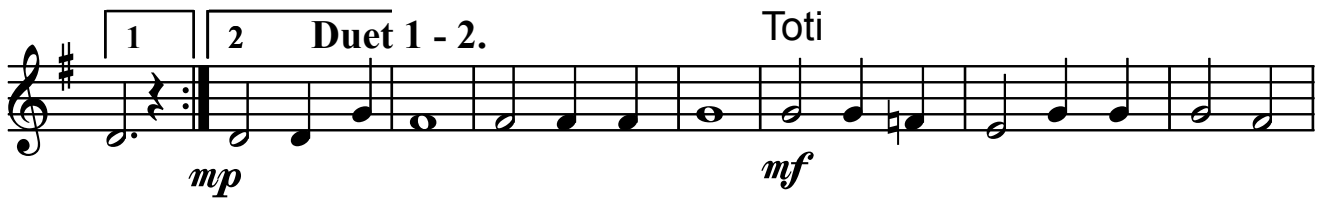
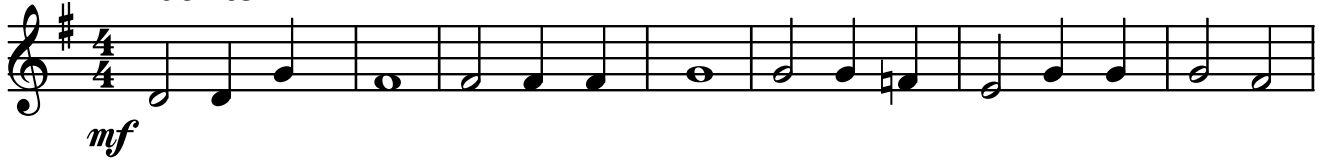


# PE ISUS

Vioara 2

Arj. Varasciuc Vasile

Andante



Andante





# PE ISUS

## Violoncel

Arj. Varasciuc Vasile

Andante

*mf*

1

2

*mf*

Nr. 2. Andante

*mp*

1

Coda Rall